

DMX-Lasershowplayer MP12C

The M12C is a complete full color standalone Lasershowcontroller. Using a standard Compact Flash Card, the M12C can playback up to 257 preprogrammed Lasershows in standard ILDA*-Format. Showselection and output parameters can be controlled via DMX-interface.

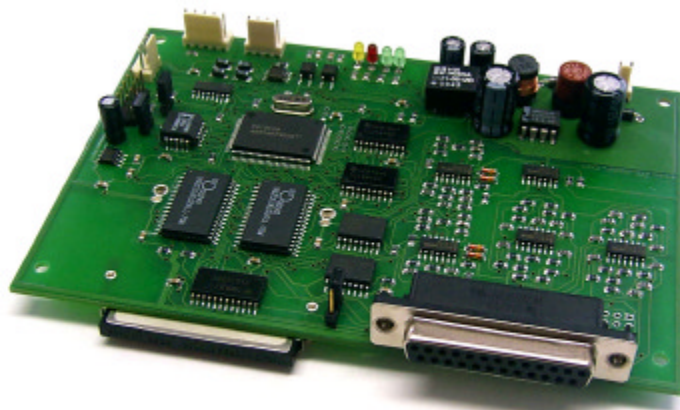
The Compact Flash Card uses a FAT16-Filesystem and can be read and written in a PC using a cardreader. A easy-to-use configuration tool (Windows**) can be used for preselecting DMX-channels.

DMX can control showselection, scanspeed, picture-repeat, picturesize, offset and blanking-adjustment.

2 hardwired inputs can be used to select 2 shows without using the DMX-interface.

The M12C offers 12 Bit output resolution for scanners and 8 Bits resolution for RGB-color. A standard ILDA-connector is used for accessing all necessary scanner and colorsignals. All signals are symmetrical for best scan-quality.

The MP12C is the first choice for the use in high performance standalone Lasersystems.



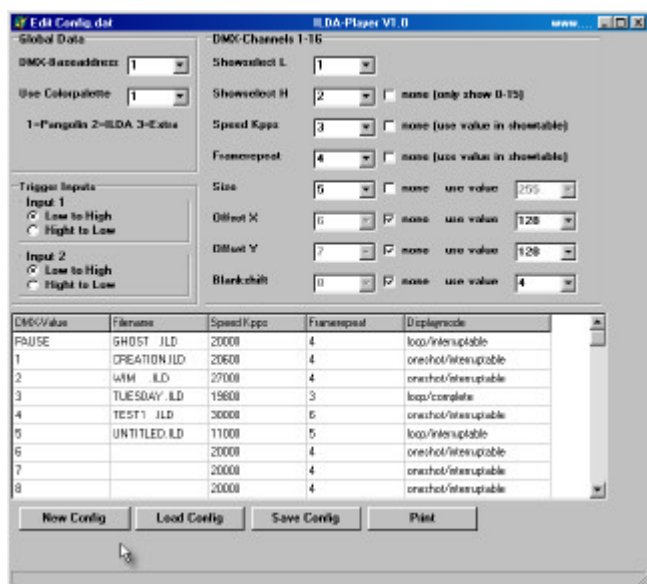
Technical Data

CPU-architecture	16 Bit / 16MIPS
Internal RAM	266 KBytes
Playback format	ILDA-standard format
CF-Filesystem	FAT16
CF-capacity	up to 1 GBytes
Filesize Show	unlimited
Number of Shows	257 (255 for DMX)
Outputspeed	2-30 Kpps
Output resolution	12 Bit X/Y

Output size	0 - 100%
Output offset	+ - 100%
X/Y-signals	+5V symmetrical
RGB-signals	+2,5V symmetrical
Powersupply	12-30V DC

Minimum requ. DMX-channels	1
Maximum requ. DMX-channels	8

Controlable Functions	Size, Offset, Framerepeat Blankshift, Speed
-----------------------	--



Configuration software for Compact Flash Card



* This showcontroller is full compatible to the ILDA-dataformat

**Windows is a registered trademark of Microsoft Corp.

Full RGB color output system