

ILDA-Lasershowplayer MP12LX

The MP12LX lasershowplayer is the lowcost version of the MP12C and was developed specially for the M6008-scanner. The board has the same size like the driver-board of the M6008-scanner. This allows to mount the boards together easy to save space.

Using a Multimediacard or SD-card allows to playback up to 256 preprogrammed shows in ILDA-format*.

The show for output can be selected via DMX or 8 Bit parallel interface.

The MMC/SD-card uses a FAT16-filessystem and can be edited with any PC supplied with a cardreader.

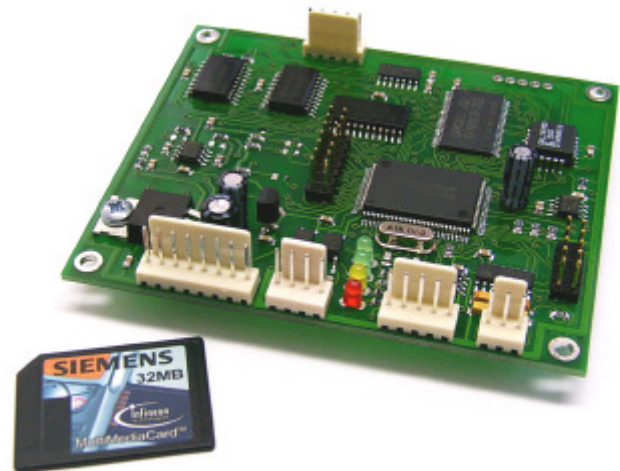
An easy-to-use configuration tool (Windows**), for setting playback parameters and DMX-channels is part of the package. It is the same software used by the MP12C controller.

DMX can control showselection, scanspeed, framerepeat and blankshifting. If no DMX-signal is available, shows can also be selected via 8 Bit TTL-interface.

The MP12LX offers 12Bit output resolution for scanners and 8 Bit resolution for RGB-color.

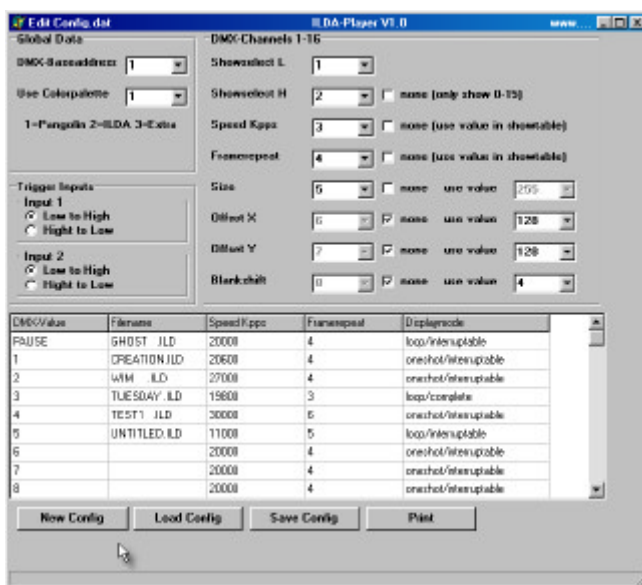
Like the MP12C, also the MP12LX offers an easy-to-use firmware update.

In combination with the M6008-scanner and a laser source, the Mp12LX creates a full standalone, DMX-controllable lasersystem 'plug and lase'.

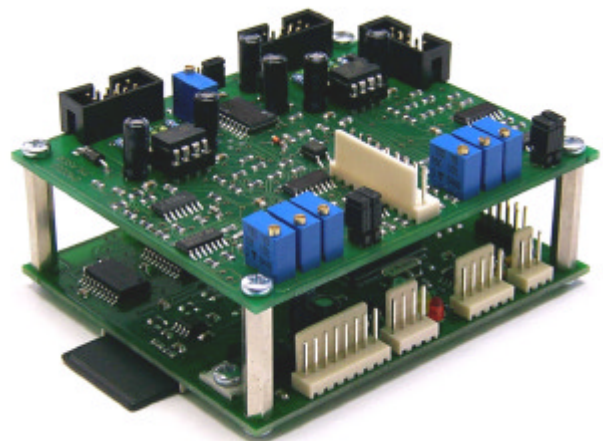


Technical Data

CPU	16 Bit / 16MIPS
Internal RAM	512 KBytes
Playback format	ILDA-standardformat
MMC/SD-filessystem	FAT16
MMC/SD-capacity	up to 1 GBytes
Filesize show	unlimited
Number of shows	256
Outputspeed	1-12 Kpps
Output resolution	12 Bit X/Y 8 Bit RGB
Outputsize	fixed to 100%
X/Y-signals	+/- 5V single ended
RGB-signals	0 - 5V
Powersupply	+/- 12V DC, 200mA
Controlable functions	Speed, Framerepeat, Blankshift



Configuration software for MMC/SD - Card



MP12LX mounted on driverboard M6008

* This showcontroller is full compatible to the ILDA-dataformat

**Windows is a registered trademark of Microsoft Corp.

RGB color output system

Mueller Elektronik, Hauptstrasse 86, D-78549 Spaichingen, Germany
Tel. +49 7424 501643 Fax +49 7424 501644 Email Info@Jmlaser.com, www.Jmlaser.com